

**Anti-BIK (pS35) Antibody**  
**Rabbit polyclonal antibody to BIK (pS35)**  
**Catalog # AP61097****Specification**

---

**Anti-BIK (pS35) Antibody - Product Information**

Application	WB, IHC
Primary Accession	<a href="#">Q13323</a>
Other Accession	<a href="#">O70337</a>
Reactivity	Human, Mouse, Rat
Host	Rabbit
Clonality	Polyclonal
Calculated MW	18016

**Anti-BIK (pS35) Antibody - Additional Information****Gene ID** 638**Other Names**

NBK; Bcl-2-interacting killer; Apoptosis inducer NBK; BIP1; BP4

**Target/Specificity**

Recognizes endogenous levels of BIK (pS35) protein.

**Dilution**

WB~~WB (1/500 - 1/1000), IH (1/50 - 1/100)

IHC~~1:100~500

**Format**

Liquid in 0.42% Potassium phosphate, 0.87% Sodium chloride, pH 7.3, 30% glycerol, and 0.09% (W/V) sodium azide.

**Storage**

Store at -20 °C. Stable for 12 months from date of receipt

**Anti-BIK (pS35) Antibody - Protein Information****Name** BIK {ECO:0000303|PubMed:7478623, ECO:0000312|HGNC:HGNC:1051}**Function**

Accelerates programmed cell death. Association to the apoptosis repressors Bcl-X(L), BHRF1, Bcl-2 or its adenovirus homolog E1B 19k protein suppresses this death-promoting activity. Does not interact with BAX.

**Cellular Location**

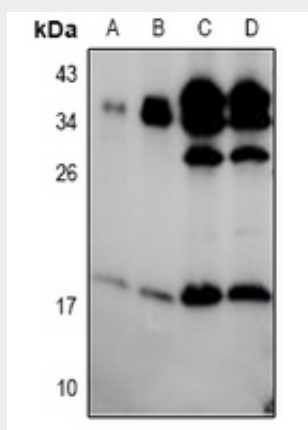
Endomembrane system; Single-pass membrane protein. Mitochondrion membrane {ECO:0000250|UniProtKB:O70337}; Single-pass membrane protein. Note=Around the nuclear envelope, and in cytoplasmic membranes.

## Anti-BIK (pS35) Antibody - Protocols

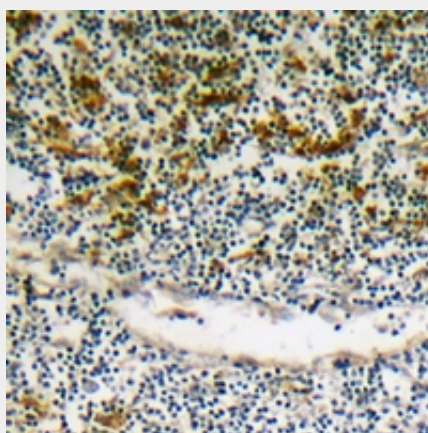
Provided below are standard protocols that you may find useful for product applications.

- [Western Blot](#)
- [Blocking Peptides](#)
- [Dot Blot](#)
- [Immunohistochemistry](#)
- [Immunofluorescence](#)
- [Immunoprecipitation](#)
- [Flow Cytometry](#)
- [Cell Culture](#)

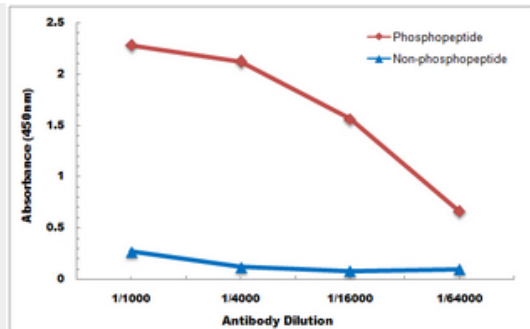
## Anti-BIK (pS35) Antibody - Images



Western blot analysis of BIK (pS35) expression in mouse embryo (A), rat ovary (B), HEK293T-EGF (C), HEK293T (D) whole cell lysates.



Immunohistochemical analysis of BIK (pS35) staining in human lymph node formalin fixed paraffin embedded tissue section. The section was pre-treated using heat mediated antigen retrieval with sodium citrate buffer (pH 6.0). The section was then incubated with the antibody at room temperature and detected using an HRP conjugated compact polymer system. DAB was used as the chromogen. The section was then counterstained with haematoxylin and mounted with DPX.



Direct ELISA antibody dose-response curve using Anti-BIK (pS35) Antibody. Antigen (phosphopeptide and non-phosphopeptide) concentration is 5 ug/ml. Goat Anti-Rabbit IgG (H&L) - HRP was used as the secondary antibody, and signal was developed by TMB substrate.

### **Anti-BIK (pS35) Antibody - Background**

KLH-conjugated synthetic peptide encompassing a sequence within the N-term region of human BIK. The exact sequence is proprietary.